

A Highly Reputed, Larger Y-axis Series for the

Automotive Mould-making and TFT-LCD Industries.

Accumulated experience of producing over 2,400 bridge-type double-column machining centers. Over 700 of these machines feature the larger Y axis and unique features making them especially suitable for automotive mold making and TFT-LCD.

Worldwide Users:

Boeing, Airbus, Toyota, Honda, BMW, VW, Nissan, Ford, Ferrari, Bosch, Peugeot, Chrysler, Rolls Royce, Isuzu, General Motors, Hyundai, Samsung, LG, Toshiba, Sony, National, Hitachi, Acer . . .

Automotive



Automotive:

- Bodies
- Bumpers
- Engine Hoods
- Parts and Accessories
- Sheetmetal Panels

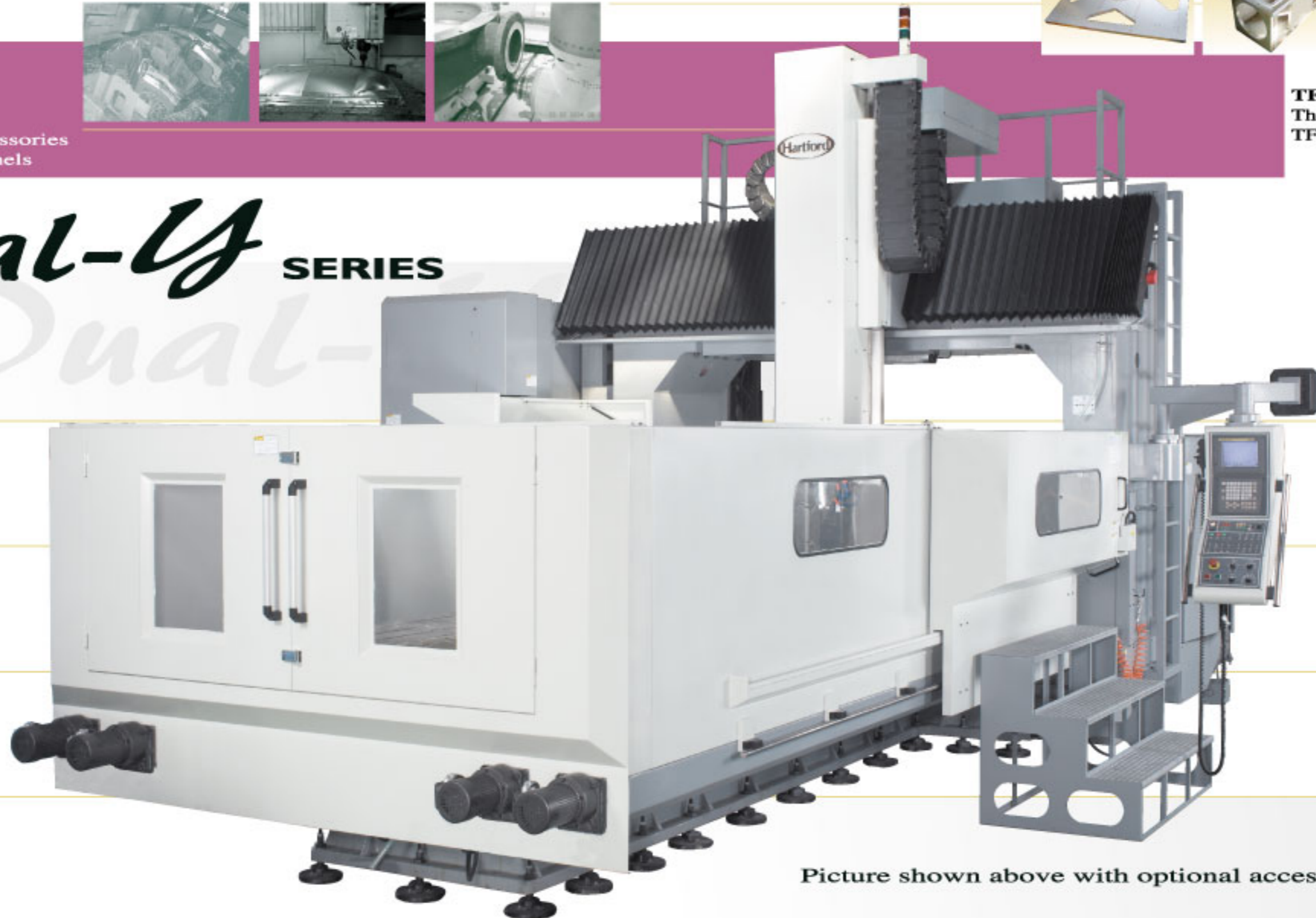
TFT-LCD



TFT-LCD:

The 7th generation 70",80" TFT-LCD displayer

Dual-Y SERIES



Picture shown above with optional accessories

ONE PIECE BASE AND COLUMN

One of the most important features on the Hartford Double Column Machining Centers is the one-piece fabricated base. Unlike conventional structure jointing by welding method, Hartford's unusual one-piece structure effectively solves problems of insufficient rigidity and excessive vibration.

The entire structure is manufactured from high quality GB300 or GA350 Meehanite cast iron, specially heat treated to relive stress and ensure that the structure remains free of distortion for life.

GREATER MACHINE WEIGHT

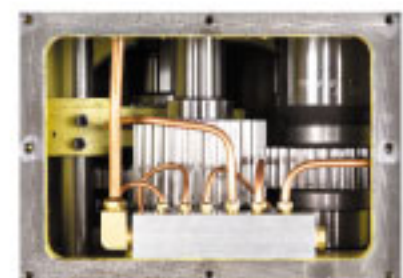
All major castings are heavily and symmetrically ribbed to provide increased dynamic stability and keep vibration to a minimum in heavy-duty machining. Overall machine weight is much more than competitors' models, over 20 tons in some cases.

BEARING ON FEED SCREW

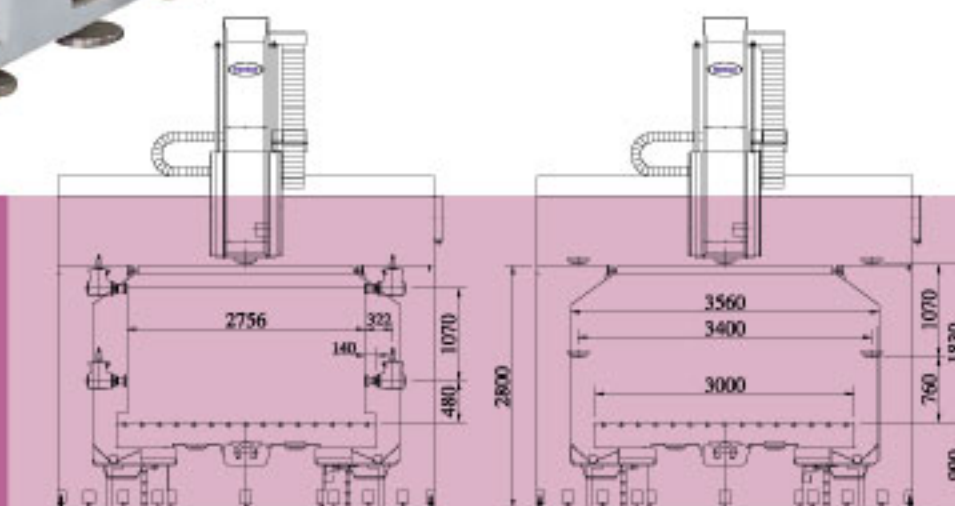
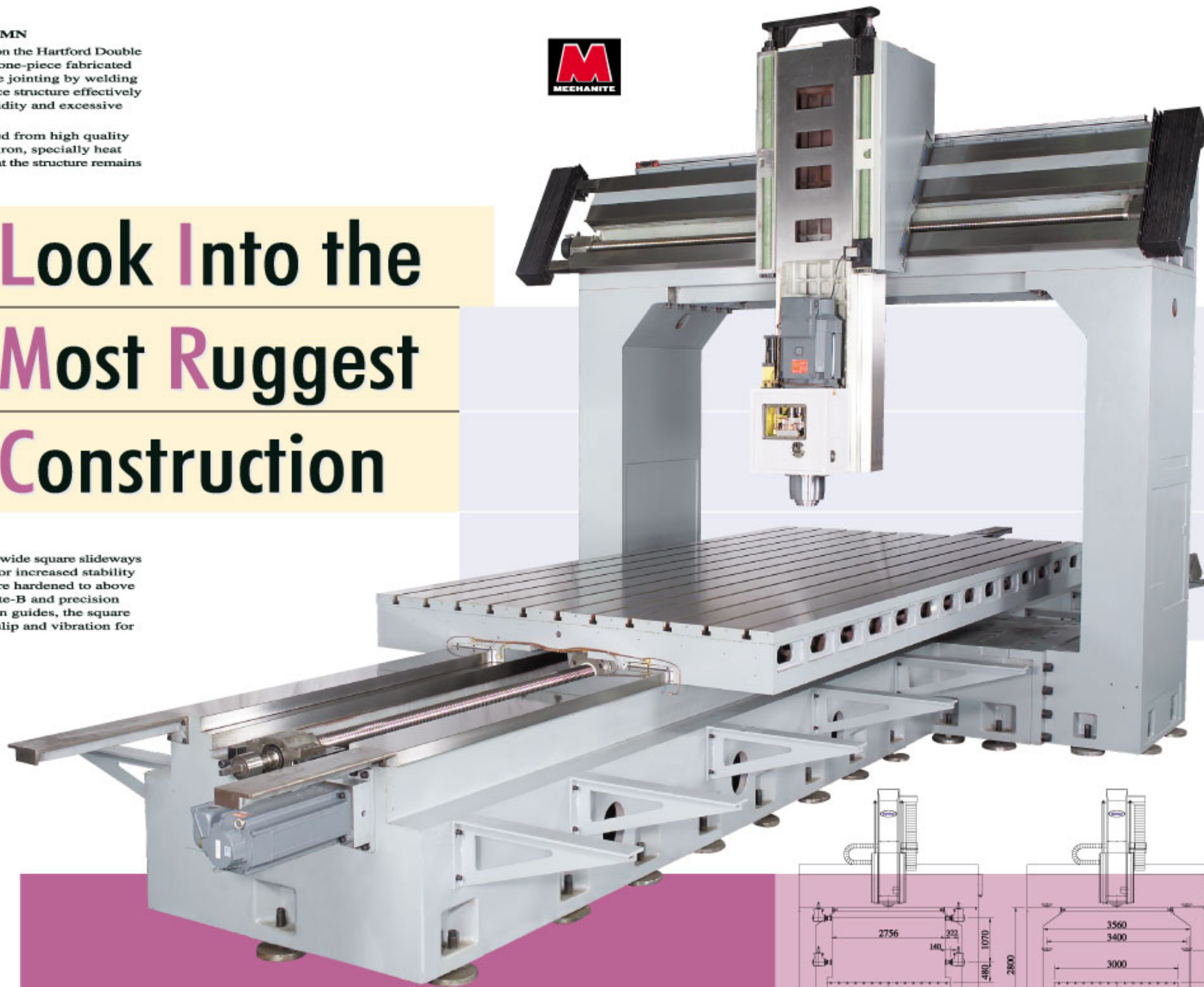
High rigidity cutting conditions are assured by using 60° angular contact ball bearings.

EXTRA-WIDE SQUARE SLIDEWAYS

Great span between columns. Extra-wide square slideways on three axes feature full support for increased stability and low vibration. All slideways are hardened to above HS65 (HRC50), coated with Turcite-B and precision scraped. Compared to linear motion guides, the square slideways offer much lower stick-slip and vibration for heavy workpiece machining.



Look Into the Most Ruggest Construction



We Guarantee Hartford's Hartrol Functions Offer You 10 Times Better Working Efficiency than Other Brands.

BEFORE



SPECIAL CANNED CYCLES

- Hole-Patterns
- Face Milling
- Side Milling
- Pocketing

WORK PIECE CALIBRATION

- X Center
- Y Center
- Center of Circle
- Rotation Angle
- Rotation Angle and Center

TOOL REGISTER

- Edit comment freely
- Tool shape display on offset screen
- Visual tool magazine

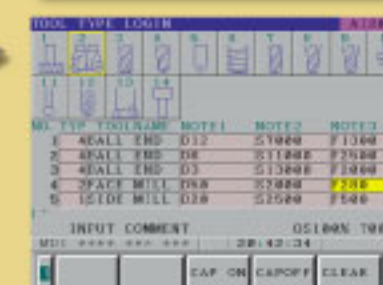
SPINDLE LOAD MONITOR

- Stage 1: Warning, but keep cutting
- Stage 2: Alarm and feed hold
- Both warning and alarm levels adjustable
- Distinguish by tool number

HPCC PARAMETER TUNER

- Reduce cutting time
- Enhance tool life
- Easy tuning

AFTER



A wide Variety of Models for your Flexible Machining Requirements

ITEM	UNIT	PRW-3340	PRW-4340	PRW-5340	PRW-6340	PRW-326M	PRW-426M	PRW-326L	PRW-426L	PRW-526L	PRW-626L
TABLE											
Working Surface	MM	3,200 x 3,000	4,200 x 3,000	5,200 x 3,000	6,200 x 3,000	3,100 x 1,830	4,100 x 1,830	3,200 x 2,040	4,200 x 2,040	5,200 x 2,040	6,200 x 2,040
T-Slot (Size x Number x Pitch)	MM	28 x 15 x 200	28 x 15 x 200	28 x 15 x 200	28 x 15 x 200	20 x 11 x 160	20 x 11 x 160	22 x 11 x 180	22 x 11 x 180	22 x 11 x 180	22 x 11 x 180
Max Table Load	kgs	11500	15000	16000	16000	9000	11100	11500	15000	16000	16000
TRAVEL											
Longitudinal Travel (X-axis)	MM	3050	4060	5100	6050	3000	4000	3050	4050	5100	6050
Gross Travel (Y-axis)	MM	3400	3400	3400	3400	2600	2600	2600	2600	2600	2600
Vertical Travel (Z-axis)	MM	820/1070(opt.)	820/1070(opt.)	820/1070(opt.)	820/1070(opt.)	920/1070(opt.)	920/1070(opt.)	920/1070(opt.)	920/1070(opt.)	920/1070(opt.)	920/1070(opt.)
Distance from Spindle Center to Column	MM	383	383	383	383	347	347	347	347	347	347
Width Between Column	MM	3560	3560	3560	3560	2840	2840	2840	2840	2840	2840
SPINDLE											
Spindle Nose Taper		#50	#50	#50	#50	#50	#50	#50	#50	#50	#50
Spindle Speed / Gearshift	r.p.m	40-3800	40-3800	40-3800	40-3800	40-4000	40-4000	40-4000	40-4000	40-4000	40-4000
Spindle Drive Motor (30min)	KW	26/37(opt.)	26/37(opt.)	26/37(opt.)	26/37(opt.)	22/26(opt.)	22/26(opt.)	22/26(opt.)	22/26(opt.)	22/26(opt.)	22/26(opt.)
FEED											
Cutting Feedrate	MM/min	1-5000	1-5000	1-5000	1-5000	1-5000	1-5000	1-5000	1-5000	1-5000	1-5000
Rapid Traverse (X axis)	MM/min	10000	8000	6000	6000	10000	10000	10000	10000	10000	6000
Rapid Traverse (Y and Z axis)	MM/min	10000	10000	10000	10000	10000	10000	10000	10000	10000	10000
ATC											
Tool Storage Capacity	pcs	40/60(opt.)	40/60(opt.)	40/60(opt.)	40/60(opt.)	S: 42 A: 40/60(opt.)	S: 60 A: 40/60(opt.)	S: 42 A: 40/60(opt.)	S: 60 A: 40/60(opt.)	S: 60 A: 40/60(opt.)	S: 60 A: 40/60(opt.)
Max.Tool Weight	KG	20	20	20	20	20	20	20	20	20	20
Max.Tool Size (Diameter x Length)	MM	A: Ø200 x 350	A: Ø200 x 350	A: Ø200 x 350	S: Ø125 x 450 A: Ø200 x 350	S: Ø125 x 450 A: Ø200 x 350	S: Ø125 x 450 A: Ø200 x 350	S: Ø125 x 450 A: Ø200 x 350	S: Ø125 x 450 A: Ø200 x 350	S: Ø125 x 450 A: Ø200 x 350	S: Ø125 x 450 A: Ø200 x 350
Tool Selection		Random	Random	Random	Random	Random	Random	Random	Random	Random	Random
Tool Shank		DIN/BT-50/CAT P50T-1	DIN/BT-50/CAT P50T-1	DIN/BT-50/CAT P50T-1	DIN/BT-50/CAT P50T-1	DIN/BT-50/CAT P50T-1	DIN/BT-50/CAT P50T-1	DIN/BT-50/CAT P50T-1	DIN/BT-50/CAT P50T-1	DIN/BT-50/CAT P50T-1	DIN/BT-50/CAT P50T-1
Pull Stud Bolt											
OTHER											
Required Air Pressure	kg/cm ²	6.5	6.5	6.5	6.5	6.5	6.5	6.5	6.5	6.5	6.5
Electric Power Consumption	KVA	60	67	90	100	50	50	61	61	68	68
Machine Weight (N.W)	kgs	53000	59000	64000	67000	32000	38000	34000	40000	44000	49000
Floor Space	MM	10200x7400	12200x7400	14250x7400	16250x7400	10500x6600	12500x6600	10500x6600	12500x6600	14600x6600	16600x6600

*Design and specifications are subject to change without prior notice.

STANDARD ACCESSORIES

- Cooling system
- Centralized automatic lubrication system
- Air blast through spindle
- Spindle oil cooler
- Screw type chip conveyor and flushing device
- Link type chip conveyor
- Portable chip bucket
- Working lamp
- Operation finishing lamp

- Automatic power off
- Operation finishing lamp
- Remote manual pulse generator
- RS-232 interface
- Leveling bolts and blocks
- Adjusting bolts and blocks
- Hand tool kits and tool box
- Operation manual and electric drawing equipment
- Fully-enclosed splash guard (Standard type)

OPTIONAL ACCESSORIES

- N.C. rotary table (4-axial movement)
- Multi-angle head (Shaft-type)
- Multi-angle universal head
- Manual and semi-auto. indexing 90° angular head
- Manual indexing 30° angular head
- Automatic tool measurement system
- Automatic workpiece measurement system
- Closed-loop linear scale positioning system
- Speed booster
- Cooling through the tool and tool holder
- Z-axis travel 1,070 mm
- 6,000 RPM gear head
- 8,000 or 10,000RPM belt-driven head (Not for PRW-3340,4340,5340,6340 model)
- Sub-magazine for loading extra large tools
- DNC software
- Fully-enclosed splash guard with extra height
- HARTROL software

OPTIONAL ACCESSORIES



MANUAL AND SEMI-AUTO 90° HEAD
The specially designed angular head provides powerful cutting capability. Advanced conical teeth positioning assures maximum accuracy for various machining applications.
•Max. speed: 2,000RPM
•Power: 11KW/15HP



MANUAL 30° HEAD
The 30° degree leaning and extended tool can reach the corners of deep hole like air inlet on automobile bumper mould. Tool release by manual.
•Max. speed: 4,000RPM
•Power: 11KW/15HP



UNIVERSAL HEAD MANUAL TOOL RELEASE
•Max. Speed: 1200 rpm
•Power: 11KW/15 HP

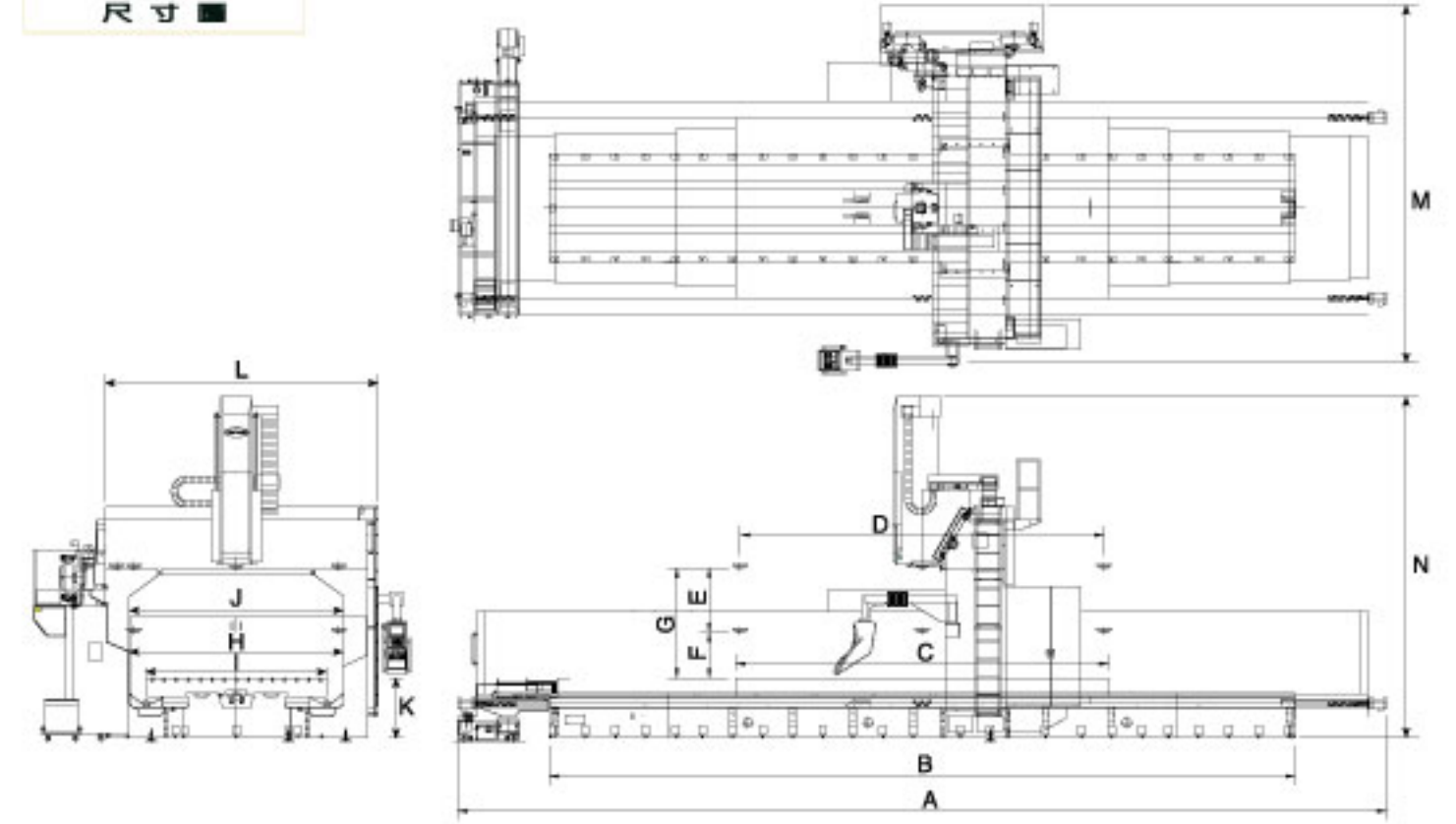


EXTENSION HEAD STRAIGHT EXTENSION HEAD
•Maximum speed: 2000 rpm
•Power: 11Kw/15HP



DEEP BORING MILLING 90° HEAD
•Max. speed: 800 rpm
•Power: 11Kw/15HP

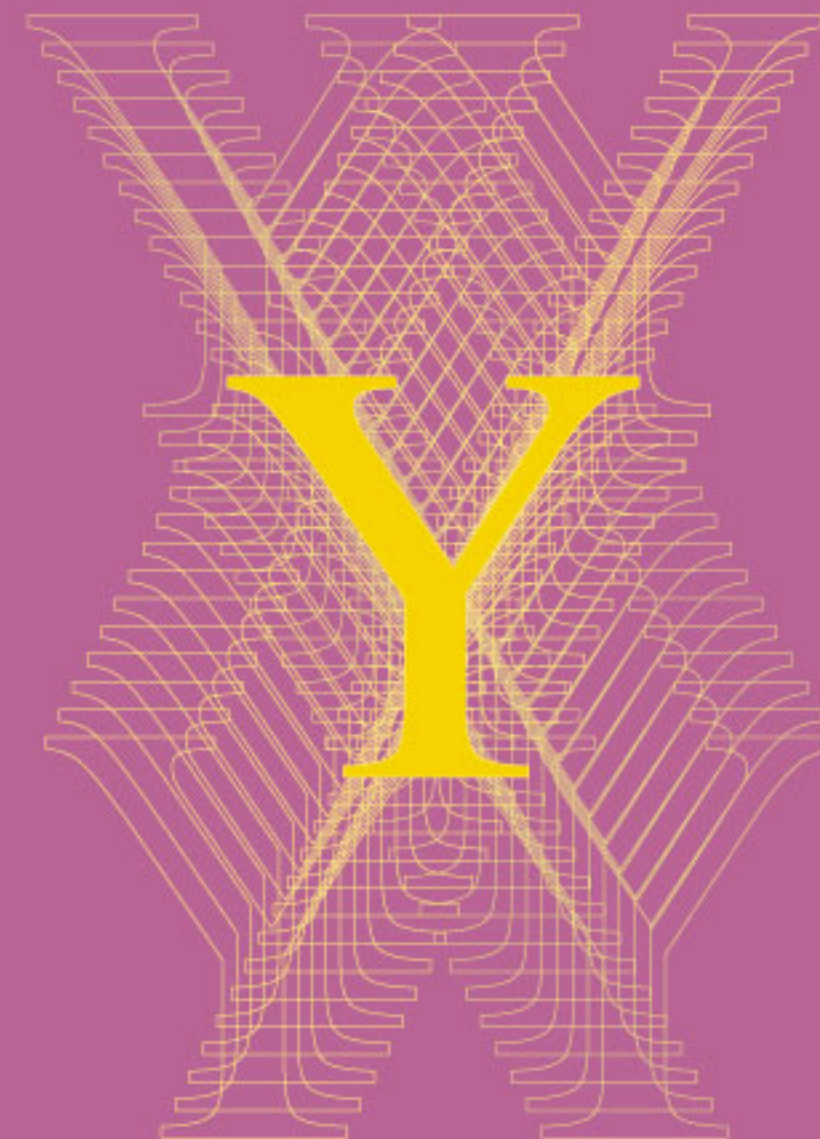
尺寸



機型	A	B	C	D	E	F	G	H	I	J	K	L	M	N
PRW-326M	8500	6400	3100	3000	920/1070	160/110	1080/1180	2600	1830	2840	920	3480	5170	2920-4800 Z1070-5170
PRW-426M	10500	8400	4100	4000								3480	5170	2920-4800 Z1070-5170
PRW-326L	8690	6250	3200	3050								3480	5170	2920-4800 Z1070-5170
PRW-426L	10650	8250	4200	4050	920/1070	140/90	1060/1160	2600	2040	2840	940	3480	5170	2920-4800 Z1070-5170
PRW-526L	12440	10350	5200	5100								3480	5170	2920-4800 Z1070-5170
PRW-626L	14700	12310	6200	6050								3480	5170	2920-4800 Z1070-5170
PRW-3340	9420	6400	3200	3050								4350	6085	2820-5042 Z1070-5480
PRW-4340	10875	8400	4200	4060								4350	6085	2820-5042 Z1070-5480
PRW-5340	13440	10400	5200	5100	820/1070	260/310	1080/1380	3400	3000	3560	990	4350	6085	2820-5042 Z1070-5480
PRW-6340	15440	12400	6200	6050								4350	6085	2820-5042 Z1070-5480

TFT-LCD and Automotive Mould-Making Machining Center

PRW Series



Dual-U

Hartford Technology Always a Step Ahead.

Hartford SHE HONG INDUSTRIAL CO., LTD.
www.hartford.com.tw

6, 6th Rd., Taichung Industrial Park, Taichung, Taiwan. E-mail: public@hartford.com.tw TEL: +886-4-23592747 FAX: +886-4-23581793
CATALOGUE NO: *prw-hb-100306'E01*

PRW Series

www.hartford.com.tw