

Affilatrice per utensili 6 assi CNC

IDEAL

The logo consists of the word "IDEAL" in a bold, white, sans-serif font. A thick red swoosh underline starts under the 'I', curves under the 'D' and 'E', and ends under the 'A'. The letters 'I', 'D', and 'A' have a black outline, while 'E' and 'L' are solid white.

6 axes CNC tool grinding machine

Da basi solide nascono solo solide realtà.
E cosa c'è più solido del granito?
IDEAL nasce dalla roccia, solida, concreta
come le nostre macchine, semplice come
solo Cuoghi Affilatrici riesce a realizzare.

IDEAL: CONCENTRATO di TECNOLOGIA.

Solid base can only brings solid realities
What else is more solid than granite?
IDEAL is born from rock, solid, concrete
as our machines, simple as only Cuoghi
Affilatrici can do it.

IDEAL: CONCENTRATION OF TECHNOLOGY.



FUTURO SEMPLICE

IDEAL

SIMPLE FUTURE

SEMPLICE PERCHÈ

Programmi standard preimpostati con i più diffusi tipi di affilatura.

Schermo Touch screen con software di programmazione facile ed intuitivo.

Possibilità di personalizzare i programmi (MySharpening®)

Controllo posizione utensile con tastatore elettronico.

SIMPLE BECAUSE

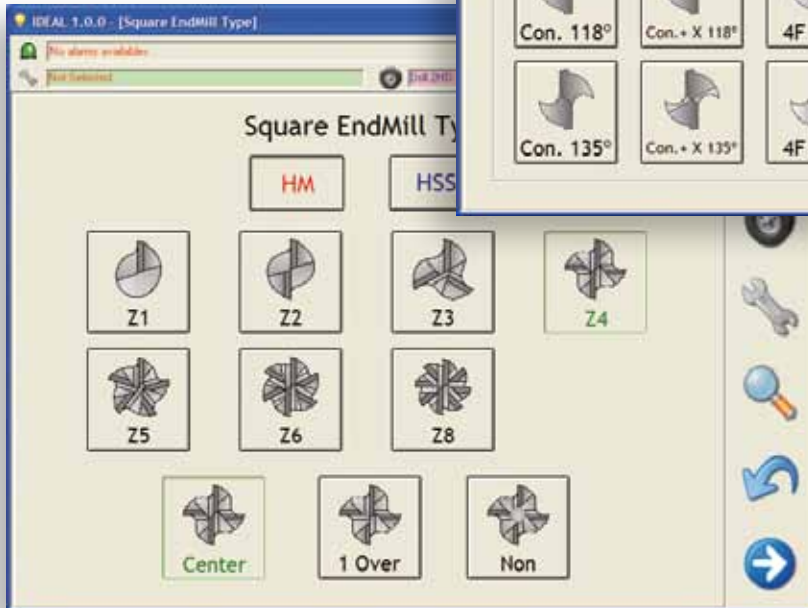
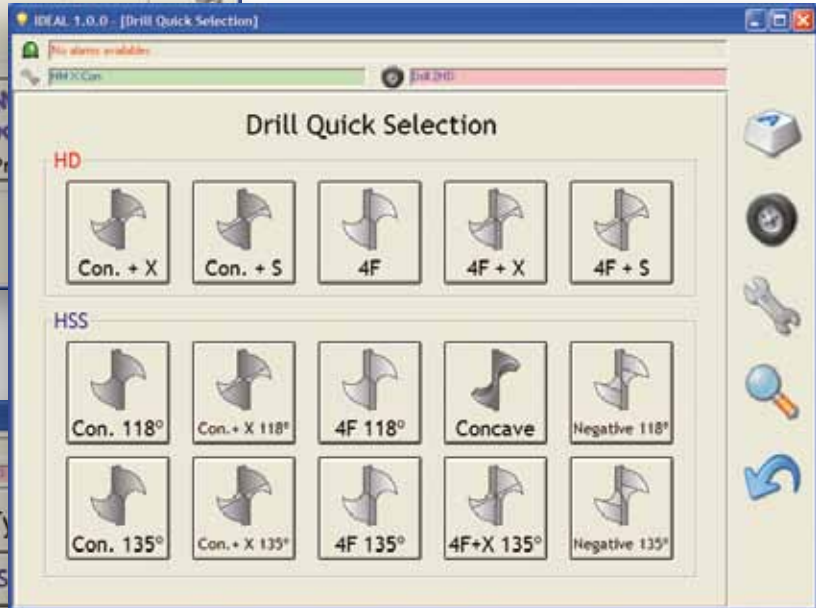
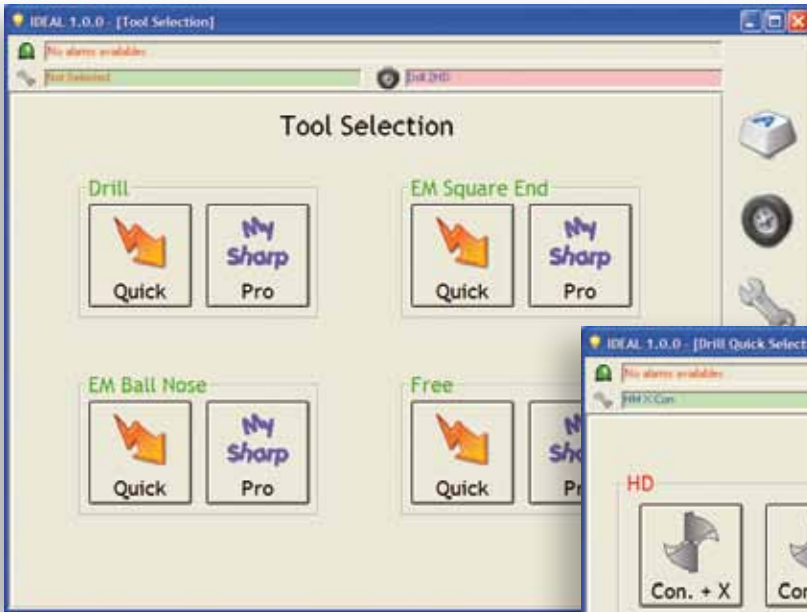
Standard preset programs with the most common types of sharpening.

Touch screen with easy and intuitive software.

Possible to personalize your own sharpening types (MySharpening®).

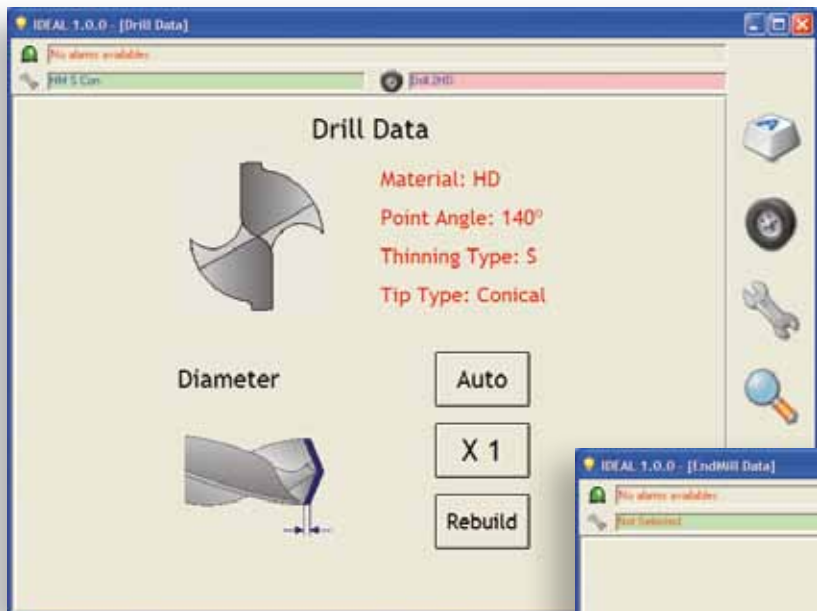
Electronic probe tip for positioning the tool.

La **SEMPLI**

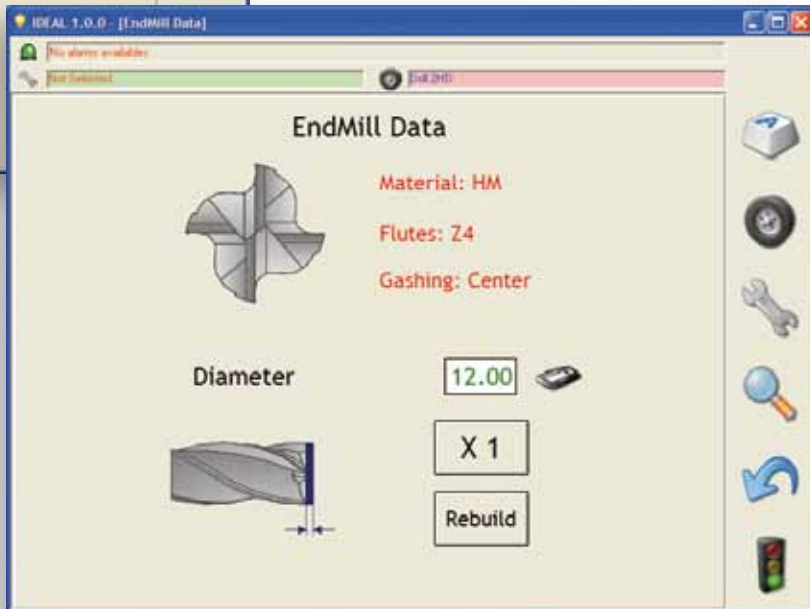


The **SIMPLI**
in a

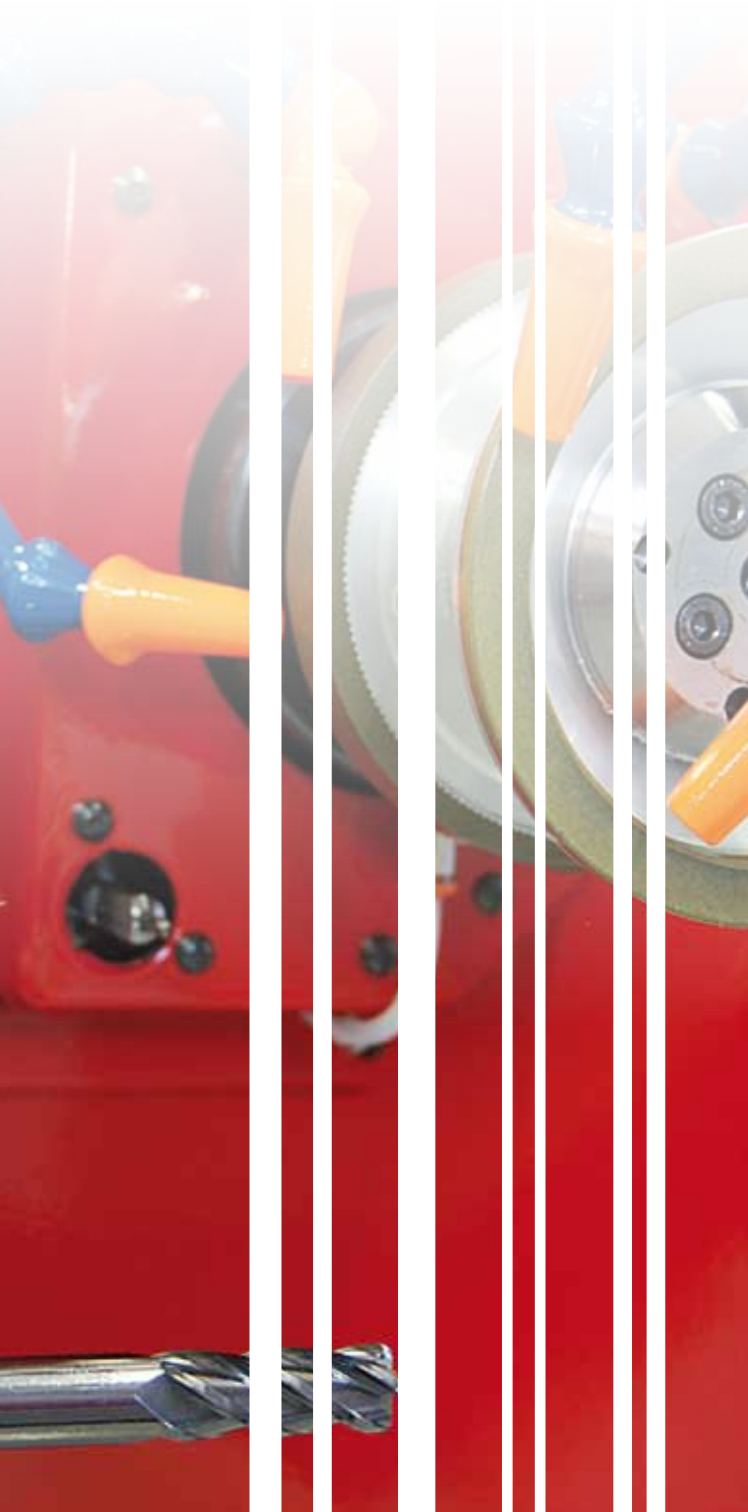
CITÀ
nelle TUE MANI



in poche
INTUITIVE
mosse



CITY
in your hands
a few
INTUITIVE
moves



IDEAL la piccola dalle grandi prestazioni

Con un basamento e un montante in granito, l'affilatrice IDEAL offre, in poco più di un metro quadro, tutta la tecnologia necessaria per riprodurre le sempre più complesse geometrie che gli strumenti moderni richiedono.

Creata per la gestione dell'utensile direttamente nei reparti produttivi, IDEAL rappresenta la macchina ideale per risolvere i tuoi problemi di affilatura.

- Punte sia in HSS che in metallo duro con le più moderne e diffuse geometrie di taglio.
- Frese da 1 a 8 taglienti sia in HSS che in metallo duro con testa piana, torica o sferica.

Caratteristiche tecniche:

diametro minimo affilabile 3 mm
diametro massimo affilabile 25 mm
lunghezza massima utensile 200 mm

Dimensioni in mm: 1100x1000x1700

IDEAL grandi idee in piccoli spazi



BENVENUTO FUTURO





IDEAL the small with the big performance

With a base and column in granite, the grinding machine IDEAL, in little more than a square meter, gives you all the necessary technology to reproduce the increasingly complex geometries, which all the modern tools require.

Created to manage the tool regrind directly in the production departments, IDEAL is the IDEAL machine to solve your sharpening problems

- Drills in HSS or Carbide with the most modern and widespread cutting geometries.
- End Mills from 1 to 8 flutes HSS or Carbide with square end, ball nose or corner radius.

Grinding capacity:

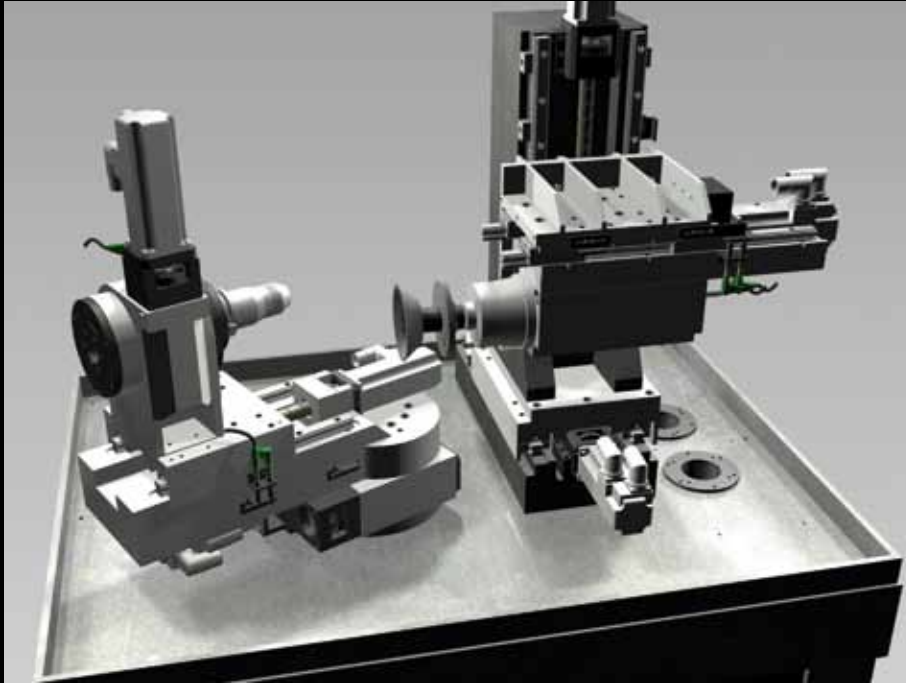
Minimum tool diameter	3 mm
Maximum tool diameter	25 mm
Maximum tool length	200 mm

Dimensions mm: 1100x1000x1700

IDEAL great ideas in a small spaces



WELCOME FUTURE





CUOGHI AFFILATRICI s.r.l.
Via S. Allende, 117 - 119
41100 Modena - Italia
Tel. +39 059 251206 - Fax +39 059 252791
cuoghi-srl@cuoghi.it - www.cuoghi.it