

Indexable
Milling
+Modular Series

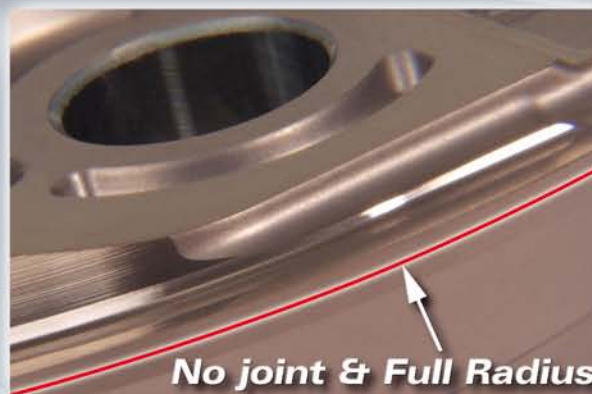
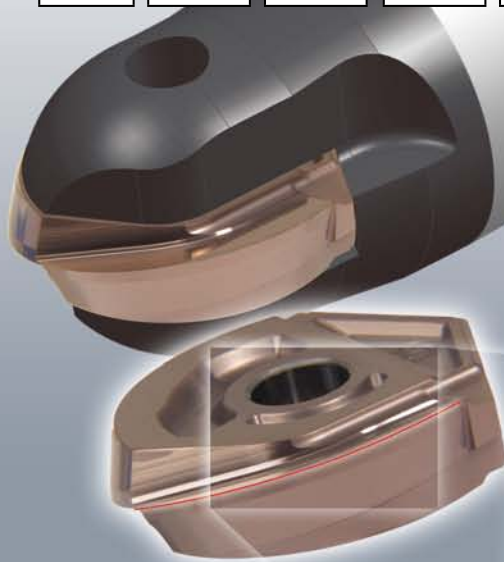
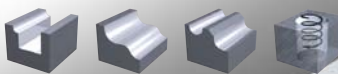
ZDFG High Speed Precision

Advanced Nano-Composite Coating **ATH+ACS**

Tool Life +

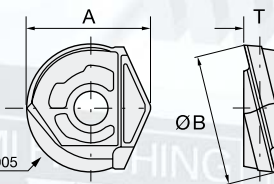
ZDFG | W Type Inserts for ABPF

V max			HRC	No. of Teeth
High Speed	Semi Finishing	Finishing	65	2



Hardened Steel:
Strong edge for
long tool life

Mild Steel, Cast Iron:
Sharp edge for
best surface quality



ID Code	Item Code	Grade	ATH-Coated ATH80D	ACS-Coated ACS05E	R	A	ØB	T
WF164	ZDFG160-WH	ATH80D	■		8	16.6	16	4.2
WF168	ZDFG160-WF	ACS05E		■				
WF165	ZDFG200-WH	ATH80D	■		10	20.3	20	5.2
WF169	ZDFG200-WF	ACS05E		■				
WF166	ZDFG250-WH	ATH80D	■		12.5	24.1	25	6.2
WF170	ZDFG250-WF	ACS05E		■				
WF167	ZDFG320-WH	ATH80D	■		16	30.2	32	7.2
WF171	ZDFG320-WF	ACS05E		■				